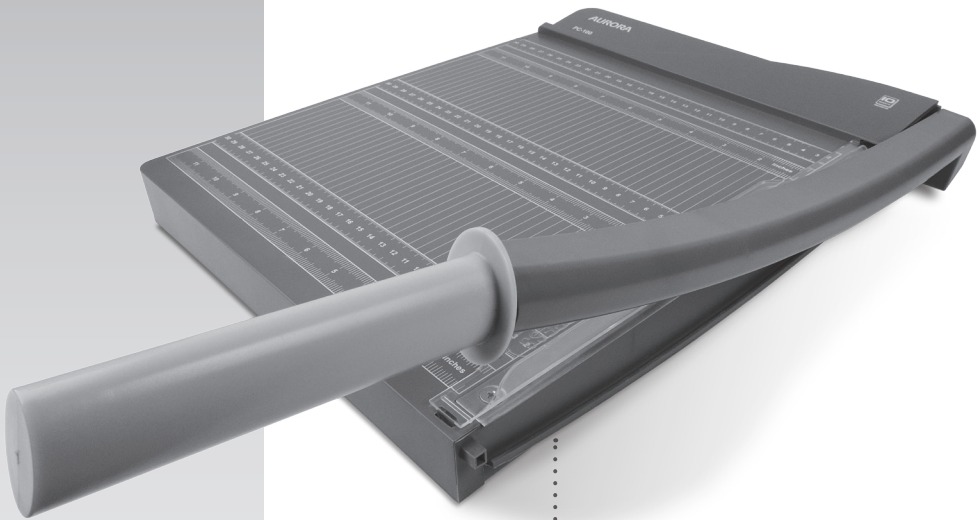


AURORA



Paper Guillotine User Manual

**1-800-327-8508
USA Only**

**1-310-793-5650
International**

Email: info@auroracorp.com

**For more information, please visit us at:
www.auroracorp.com**

PC-100

Model No.

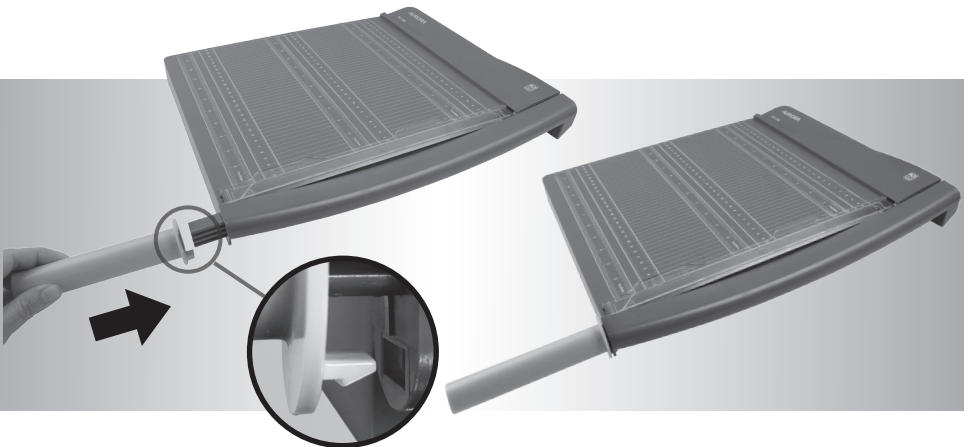
Please read these operating instructions before using the unit.

WARNING: SAFETY INSTRUCTIONS, READ BEFORE USING!

- Paper guillotine has very sharp exposed blade. This product is not intended for use by children. Keep product out of the reach of children.
- Avoid touching the cutting blade with hands.
- Keep loose clothing or jewelry away from the cutting blade.
- Do not operate the guillotine without the protective guard rail in place.
- Do not carry the guillotine by holding the cutting blade.
- Do not carry the guillotine by holding the handle only.
- Do not cut paper clips, staples, carboards, hard materials, plastic, or metal film.
- Never place the product near water or any heat source.
- Do not attempt to service this product yourself as doing so may expose you to sharp cutting blades and will void the manufacturer's warranty.
- Never try to clean, clear or lubricate the cutting blade.
- Never cut beyond the specified sheet capacity. This may result in extensive damage to cutting blade.

Assembling the handle

Assembling the Handle



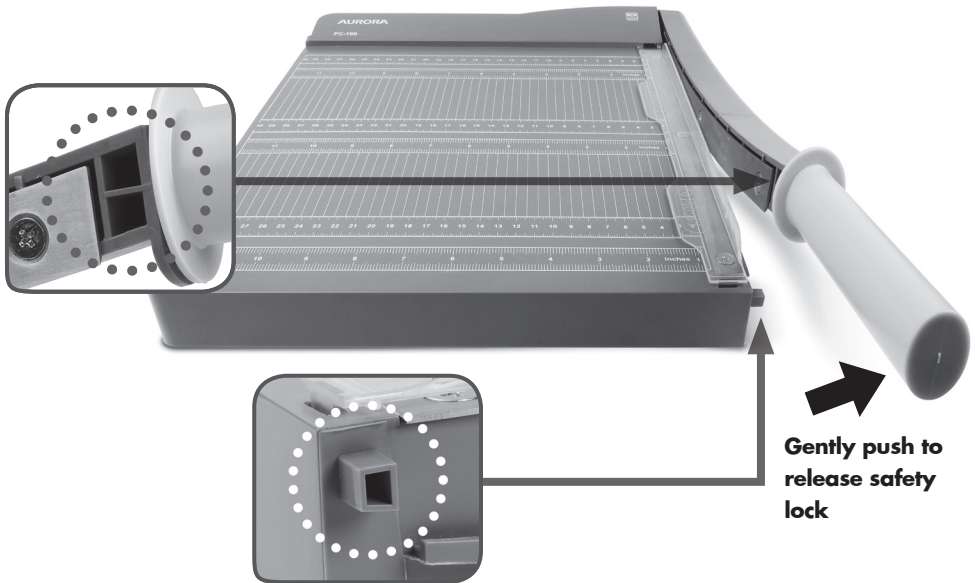
OPERATION

- Max. Cutting Capacity: 10 Sheets of 20 lb. bond paper*

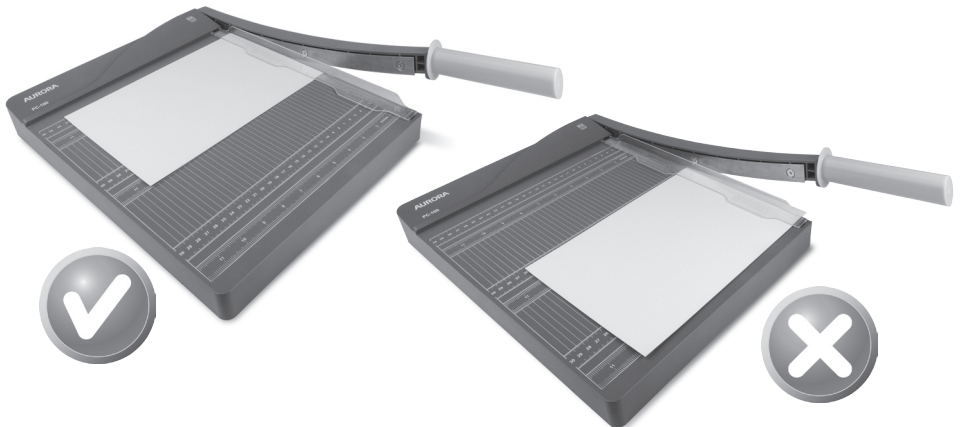
- Max. Cutting Length: 12 in./ 300 mm

* One folded sheet of paper equates to 2 sheets of paper. Heavier paper, humidity or other than rated may reduce cutting capacity.

1 Release handle from safety lock



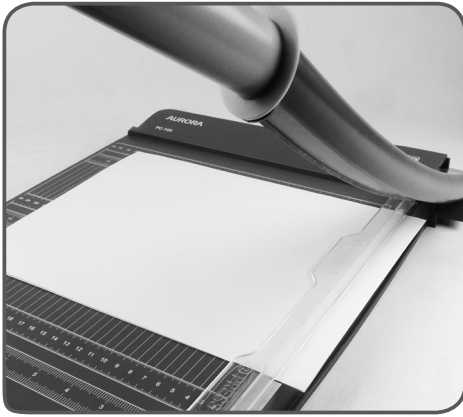
2 Correctly position the paper



CONTINUED NEXT PAGE

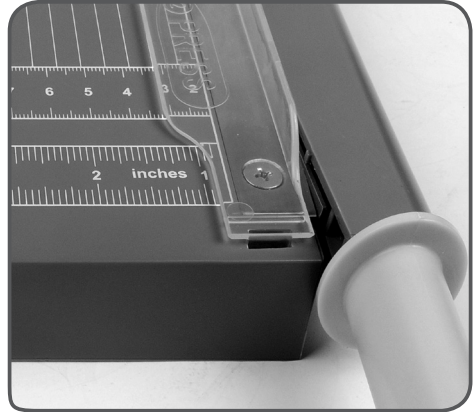
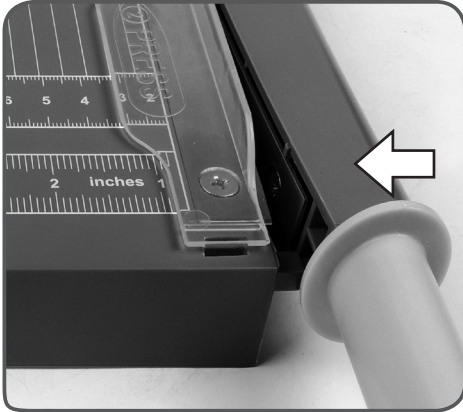
OPERATION

3 Operating the Guillotine:



⚠ Caution: Blade is sharp!

4 When Finished Cutting: Place down the handle/cutting blade and set the handle in locked position.



■ NOTE:

- Remove paper clips and staples from papers before use.
- Always operate the product on a flat and steady surface.
- Cutting beyond the specified sheet capacity can quickly wear and damage the cutting blade.
- Always place down the handle/ cutting blade and set the handle in locked position when not in use.

MAINTENANCE

- If there is a problem with your product, please contact customer support at our Service Center 1-800-327-8508.
 - Do not attempt to service this product yourself as doing so may expose you to sharp cutting blades and will void the manufacturer's warranty.
 - Only clean the guillotine by carefully wiping the unit with a dry soft cloth or towel.
- **NOTE: Do not lubricate the cutting blade.**

SERVICE CENTER

If you have any questions in regards to the operation of this product, please contact our service center at:

Telephone: **1-800-327-8508 (U.S.A. only) or 1-310-793-5650 (International)**

Business hours: Monday to Friday 8:00 am - 5:00 pm PST (Pacific Standard Time)

Email: info@auroracorp.com

Or for more information, please visit our website at <http://www.auroracorp.com>

LIMITED PRODUCT WARRANTY

Your new Aurora product is warranted to the original consumer against defects of workmanship and materials for a period of one year from the original purchase date.

Should there be a defect or malfunction of this product, Aurora will repair or replace the product free of charge. Customer is responsible for all shipping charges to return the defective product to Aurora. **A copy of the proof of purchase showing original purchase date is required.** This warranty is void if the product has been subject to damage, unreasonable use, improper service, or other causes not arising from defects in original material or workmanship. This warranty is void if factory seal is broken or removed from the product. This warranty does not include adjustments, parts or repairs required by circumstances beyond the control of Aurora.

There are no expressed warranties other than those stated herein.

Any expressed or implied warranties, including but not limited to merchantability and fitness for a particular purpose are limited to the above warranty period. Aurora shall not be liable for any incidental or consequential cost, expenses or damages resulting from any failure defect or malfunction of this product.

Some states do not allow the exclusion of limitations of implied warranties or consequential damages, therefore, the above limitations may not apply to you.

This warranty grants you specific legal rights, and you may also have other rights that vary from state to state.

Before returning any product, please call our Service Center for specific return instructions.

Aurora Corp. of America: 1-800-327-8508 USA ONLY

1-310-793-5650 INTERNATIONAL • info@auroracorp.com

AURORA

1-800-327-8508
USA Only

•

1-310-793-5650
International

•

Email: info@auroracorp.com

•

For more information, please visit us at:
www.auroracorp.com