

# NUOVA

.....

## Laminator

with Hot & Cold settings



**USER MANUAL**

.....

**LM1380HC**

Please read these  
operating instructions  
before using the unit.

.....

**Customer Service:  
1-800-327-8508**



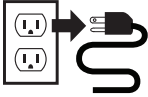
# **WARNING / SAFETY INSTRUCTIONS**



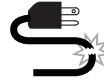
Caution! Surface may be hot when in use.



Insert sealed edge first



Always unplug the unit when not in use to prevent accidents



Do not operate the unit with a damaged power supply cord

Your safety as well as the safety of others is important to AURORA. In this manual as well as on the product are important safety instructions. Please read and retain these instructions. Failure to follow all instructions may result in electric shock, fire or serious personal injury. The warnings, cautions, and instruction discussed in this instruction manual cannot cover all possible conditions and situations that may occur. It must be understood by the operator that common sense and caution are factors which cannot be built into this product, but must be supplied by the operator.

Although your appliance is easy to operate, for your safety, the below warnings must be followed:

- **DO NOT SPRAY OR KEEP ANY AEROSOL PRODUCTS IN OR AROUND THE LAMINATOR. DO NOT USE CANNED AIR.** Never use anything flammable to clean the machine. This may result in serious injury or damage to the product.
- Be sure the power switch is set to "OFF" position before plugging in the machine.
- Only use pouches intended for laminator use. Pouches that are too thin will be easily caught and result in jams.
- Do not insert anything into the machine other than laminating films and suggested items.
- Never put any metal object or your fingers into the unit's paper inlet. If an item gets jammed, switch power off and unplug from outlet immediately. Once cooled, remove jam from laminator with the use of the release lever located on the back of the machine.
- Never laminate any heat sensitive materials (i.e. thermal fax paper) or wet/damp items.
- Never disassemble, repair, or redesign the machine on your own. When necessary, please contact AURORA for repairs.
- Do not operate unit after any malfunction or damage.
- Whenever smoke or abnormal smell is detected, immediately unplug the unit and call the Customer Service Center.
- Do not unplug the socket by pulling on the supply cord.
- Never leave the unit unattended while connected to an electrical outlet.
- The unit must be unplugged: a) Before any cleaning or maintenance, b) After operation, and c) If unit appears to be faulty
- Extension cords are not recommended.
- To avoid electrical shock do not immerse unit, power cord or plug in water or any other liquid.
- Do not touch the machine with wet or damp hands.
- Do not place the unit near any heat source.
- Do not cover the unit while it is in use. Never put your hand over any vents when the unit is in operation. Serious injury may occur.
- Close supervision is necessary when unit is used near children.
- The plastic bag in which the product was packaged should be kept out of reach of children as it poses a suffocation hazard.
- Do not use unit other than its intended use.

Warning / Safety Instructions  
Installation  
Operation  
Care and Cleaning / Storage  
Troubleshooting  
Service Center  
One Year Limited Warranty

Maximum feeding width of 13" (33 cm)

Laminates up to a maximum thickness of 0.02" (0.5 mm)

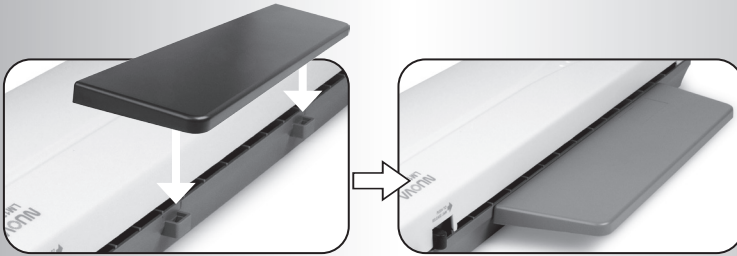
Accepts pouches up to a max. thickness of 3-5 mil (80-125 microns)

Voltage: 120v~60Hz / 3.5A

## INSTALLATION

To reduce the risk of electric shock, if the machine has a polarized UL approved plug (one blade is wider than the other), this plug will fit in a polarized outlet only one way. If the plug does not fit fully in the outlet, reverse the plug. If it still does not fit, contact a qualified electrician to install the proper outlet. Please do not change the plug in any way. If the supply cord is damaged, it must be replaced by the manufacturer, its service agent or similarly qualified person in order to avoid a hazard.

As pictured, attach the cooling holder to the dedicated slots located in the back section of the laminator. (FIGURE 1)



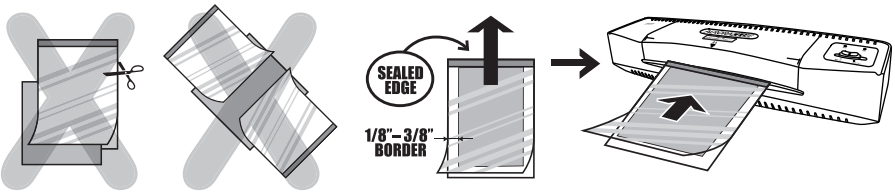
**FIGURE 1**

# OPERATION

This machine can be used with cold or warm laminating films. The items being laminated can be pictures, cards, documents, paper, etc. but must be no thicker than 0.02" (0.5 mm).

**NO CARRIER SHEET IN REQUIRED.** Only use pouches intended for laminators. Make sure item in laminating pouch is evenly inserted. For smaller items, do not use too large a pouch since this may cause poor laminating quality and create jams. Do not laminate wet items. Laminating damp/moist documents will result in poor laminate quality.

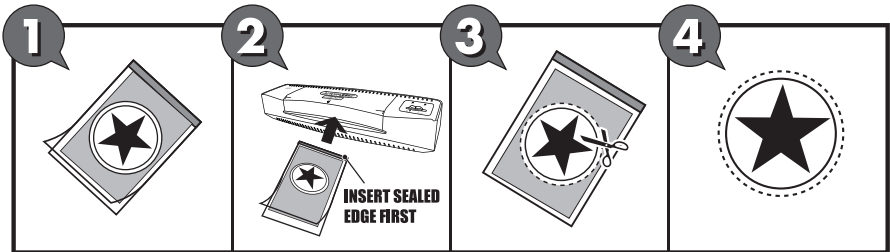
To avoid creasing, **DO NOT** insert the item with the "open side" of the laminating pouch first. Be sure to follow the guidelines on the feed guider to properly insert the item in to the entry. Be sure to insert with the closed (sealed) edge of the laminating pouch first.



Correctly position item using only 1 laminating pouch per item.


Item should be centered within the pouch with a 1/8" - 3/8" border.

Be sure to insert with the closed (sealed) edge first



For smaller or irregular shaped items, position item in center of adequate pouch and trim after lamination. **DO NOT CUT LAMINATING POUCH TO FIT ITEM BEFORE LAMINATION.**

## **HOT LAMINATING**

1. Insert the power plug into an electrical socket.
2. Push the control switch to "HOT ". The motor will start up and the red "POWER" indicator light will turn on.
3. Wait 3-5 minutes for the machine to warm-up. The green "READY" indicator will light up when the proper laminating temperature is reached.
4. Put the item being laminated into a laminating film leaving a 1/8"-3/8" border from the sealed end of the pouch.
5. Insert them together into the feed entry at the front of the laminator. Be sure to insert with the closed (sealed) edge of the laminating pouch first.

CONTINUED NEXT PAGE

# OPERATION

6. The finished laminated item will roll out through the exit slot on the back of the laminator.
7. Push control switch back to "OFF" to power off the laminator after use.

## ❄️ COLD LAMINATING

When switching over to the Cold lamination mode immediately after Hot laminating, please wait at least 60 minutes for the laminator to cool down before use. If laminator is too hot for Cold lamination, item being laminated could be damaged.

1. Insert the power plug into an electrical socket.
2. Push the control switch to "COLD ❄️". The motor will start up and the red "POWER" indicator light will turn on.
4. Put the item being laminated into a laminating film leaving a 1/8"-3/8" border from the sealed end of the pouch.
5. Insert them together into the feed entry at the front of the laminator.  
Be sure to insert with the closed (sealed) edge of the laminating pouch first.
6. The finished laminated item will roll out through the exit slot on the back of the laminator.
7. Push control switch back to "OFF" to power off the laminator after use.

### When Finished Laminating:

**⚠️ Caution:** When the laminated item exits, it may be very hot and soft. Handle the laminated item with care. Pressing the item with a book or other heavy objects may help make it flat and smooth.

### JAM RELEASE LEVER (CLEAR JAMMED ITEMS)

This laminator features a Jam Release lever to easily clear stuck items in the machine. Please refer to "Troubleshooting" at page 9.

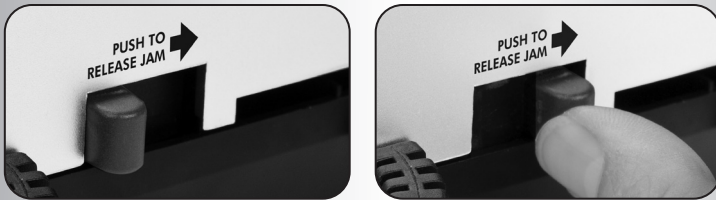


FIGURE 2

# CARE AND CLEANING / STORAGE



## Don't/Caution:

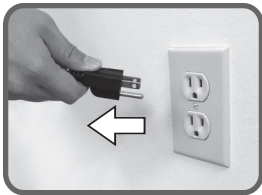
- Do not spray or keep any aerosol products in or around laminator.
- DO NOT USE CANNED AIR ON LAMINATOR.



**DO NOT USE  
AEROSOL PRODUCTS!**

DO NOT use any sharp or pointed articles for cleaning the inside, as this will damage the laminator. Since deposits or residue will influence the laminating results, periodically clean the rollers after use. While "ON", insert a folded letter-sized paper into the entrance of laminator. The paper will roll out with any present residue. Repeat several times to completely clean the rollers. If the item being laminated is jammed, turn off and unplug the machine and refer to "JAM RELEASE LEVER" in the Operations portion of this user manual.

## ■ TO DUST / CLEAN THE LAMINATOR:



- ❶ Always **UNPLUG** the laminator first.



- ❷ Take a soft dry cloth and wipe the laminator body.



- ❸ Do not clean the laminator with spray or liquid cleaners or water. Do not immerse the laminator in water.

## ■ STORAGE

Always unplug the laminator from its outlet when not in use. Allow the laminator to completely cool before storing. Store the laminator in a dry area. Never wrap the cord around the laminator since this will contribute to the wear on the cord. Do not place heavy items on top of the laminator, which may result in possible damage.

# TROUBLESHOOTING

**Warning: Failure to properly maintain your laminator will void the warranty.** If there is a problem with your unit, check below for the symptoms and steps to resolve. If you continue to have problems, contact customer support at our Service Center. **DO NOT ATTEMPT TO REPAIR BY OPENING THE LAMINATOR. This will completely void the product warranty.**

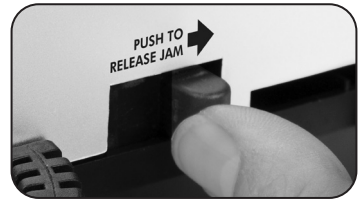
## **No Power. Indicators do not turn on and laminator does not work.**

Check the power plug and see if it is correctly plugged into the wall socket. If it is still not working, please call the Customer Service center.

## **Laminator is jammed:**

Only use pouches intended for laminators. Make sure item in pouch is evenly inserted. For smaller items, do not use too large a pouch since this may cause poor laminating quality and create jams. Clear jams by using the release lever:

- Turn off laminator and unplug from power outlet.
- Make sure laminator is on a stable flat surface.
- Firmly push the Jam Release lever all the way to the right and hold.
- With the other hand, pull to removing the jammed item from either the front or back opening.
- When cleared, plug the power cord back into the outlet. Turn on and resume use.
- If laminator repeatedly jams, please contact the Customer Service center.



## **Avoid jams by:**

- Only use pouches intended for laminators.
- Be sure to insert with the closed (sealed) edge of the laminating pouch first.
- Make sure item in laminating pouch is evenly inserted.
- **For smaller or irregular shaped items**, do not use too large a pouch since this may cause poor laminating quality and create jams. Position in center of adequate sized pouch and trim after lamination. **DO NOT CUT LAMINATING POUCH TO FIT ITEM BEFORE LAMINATION.**
- Do not laminate wet items. Laminating damp/moist documents will result in poor laminate quality.

## **Lamination is cloudy and or bubbled:**

Run the laminated item through the laminator again. The laminator requires a 3-5 minute preheating time.



# SERVICE CENTER

If you have any questions in regards to the operation of this shredder or in need of a spare part, please contact our service center at:

Aurora Corp. of America

Telephone: **1-800-327-8508 (U.S.A. only) or 1-310-793-5650 (International)**

Business hours: Monday to Friday 8:00 am - 5:00 pm PST (Pacific Standard Time)

Email: [info@auroracorp.com](mailto:info@auroracorp.com)

Or for more information, please visit our website at <http://www.auroracorp.com>

## LIMITED PRODUCT WARRANTY

Your new NUOVA product is warranted to the original consumer against defects of workmanship and materials for a period of **one year** from the original purchase date.

Should there be a defect or malfunction of this product, AURORA will repair or replace the product free of charge. Customer is responsible for all shipping charges to return the defective product to Aurora. **A copy of the proof of purchase showing original purchase date is required.** This warranty is void if the product has been subject to damage, unreasonable use, improper service, or other causes not arising from defects in original material or workmanship. This warranty is void if factory seal is broken or removed from the product. This warranty does not include adjustments, parts or repairs required by circumstances beyond the control of AURORA.

There are no expressed warranties other than those stated herein.

Any expressed or implied warranties, including but not limited to merchantability and fitness for a particular purpose are limited to the above warranty period. AURORA shall not be liable for any incidental or consequential cost, expenses or damages resulting from any failure defect or malfunction of this product.

Some states do not allow the exclusion of limitations of implied warranties or consequential damages, therefore, the above limitations may not apply to you.

This warranty grants you specific legal rights, and you may also have other rights that vary from state to state.

**Before returning any product, please call our Service Center for specific return instructions.**

**1-800-327-8508 USA ONLY**

**1-310-793-5650 INTERNATIONAL • [info@auroracorp.com](mailto:info@auroracorp.com)**



**1-800-327-8508**  
**Usa Only**



**1-310-793-5650**  
**International**



**Email: [info@auroracorp.com](mailto:info@auroracorp.com)**



**For more information, please visit us at:**  
**[www.auroracorp.com](http://www.auroracorp.com)**

